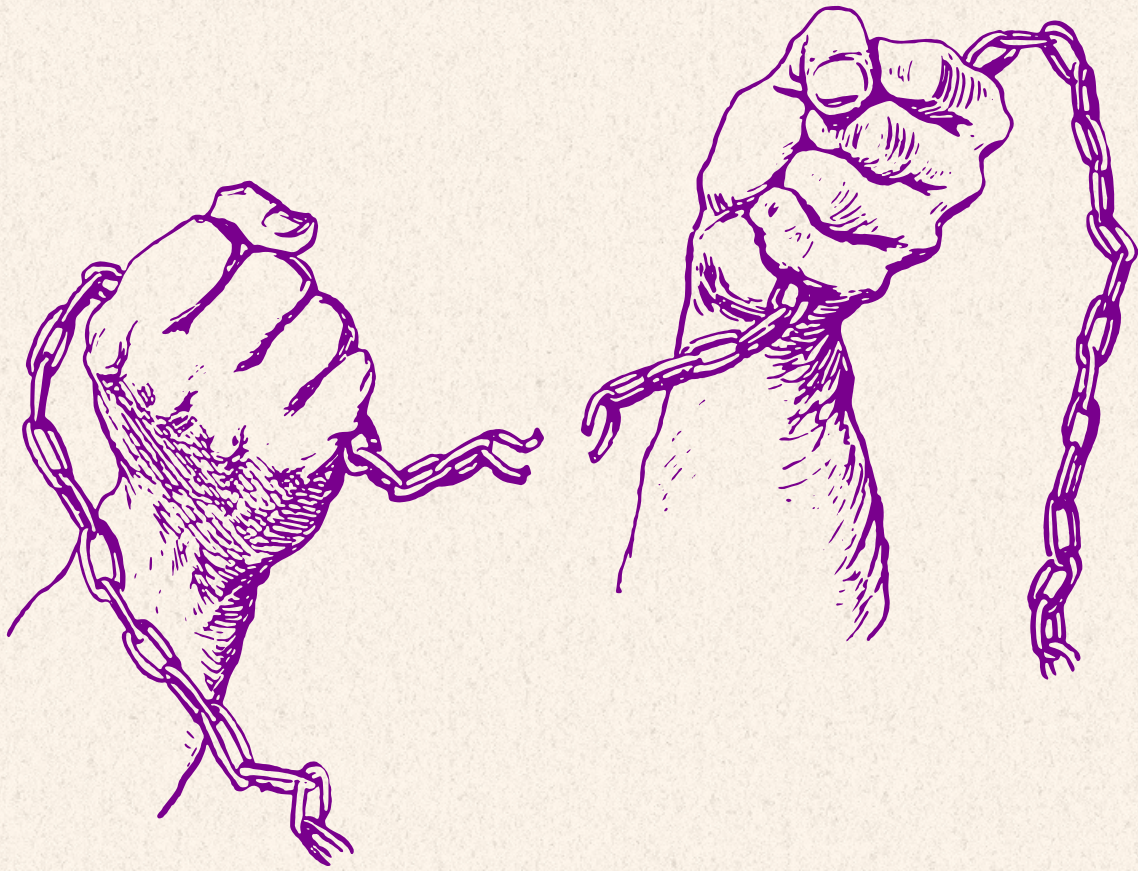


WEEK THREE
DEVOTIONAL



Repentance and Commitment

Revd Dr Jeremy-Joe Tan
Faculty, Trinity Theological College

WEEK THREE DEVOTIONAL

Jesus began His earthly ministry with a powerful call. “Repent, for the kingdom of heaven is at hand.” (Matthew 4:17)

But what does repentance really mean?

Is it just about saying sorry?

Or feeling sad and sorrowful?

Or trying to make up for the past wrongs?

WEEK THREE DEVOTIONAL

The Greek term for repentance is metanoia (μετάνοια) - a change of mind or heart. However, there is much more to it. The Greek Orthodox Church of America defines metanoia as “a change of mind, a reorientation, a fundamental transformation of outlook, of man’s vision of the world and of himself, and a new way of loving others and God.”

Biblical repentance is a radical conversion - turning away from an old way of life to a new life in Christ.

WEEK THREE DEVOTIONAL

It is not just a repentance from, but a repentance to!

We turn from our sinful ways to holy living in Christ. We turn from the attractions of the world to the light of Christ.

The lyrics of an old song sums it up best – “the world behind me, the cross before me; no turning back, no turning back”.

WEEK THREE
DEVOTIONAL

Reflection Questions

- What are some areas that the Holy Spirit is leading me to repent of?
- What is the Holy Spirit leading me to commit to?
- What practical steps can I take to keep my heart and mind fixed on Christ daily?

WEEK THREE DEVOTIONAL

Prayer

Dear Heavenly Father, would you send your Holy Spirit to convict me of my sins. Help me to repent. Help me to turn from my wrong ways and turn to your holy ways of living. Help me to love you and to love others. In Jesus' name we pray, Amen.

WEEK THREE FAITH IN ACTION

In this season of prayer, fasting, and sacrificial giving, our 'Faith in Action' series highlights key Diocesan ministries where you can make an impact.

This week, we are spotlighting the work of our School Chaplaincy.

WEEK THREE FAITH IN ACTION

School Chaplaincy

Christian school chaplaincy nurtures the spiritual and emotional well-being of students, staff, and the school community. Rooted in Christ's love, chaplains provide pastoral care, spiritual guidance, and moral support, integrating faith into daily school life through prayer, biblical teaching, and mentorship.

WEEK THREE

FAITH IN ACTION

Beyond chapel services and devotions, chaplaincy workers engage personally through canteen conversations, student camps, and one-on-one pastoral care, guiding students in faith, character, and purpose. As a spiritual anchor, chaplaincy fosters a Christ-centered environment in our schools, supporting holistic growth for our students and staff.

WEEK THREE

However, sustaining this vital ministry requires significant financial commitment. On average, each school's chaplaincy budget stands at \$150,000, often comprising 20-40% of an anchor parish's annual budget. To help ease this financial burden, the Education Mission Fund (EMF) was established to support chaplaincies in hiring and training efforts.

We invite you to prayerfully consider giving to this ministry, investing in the spiritual formation of the next generation.

WEEK THREE

If you would like to contribute to our Education Mission Fund (EMF), you may contribute via PayNow.

PayNow via UEN T08CC4016J.

Please indicate EMF.

Thank you for your contribution to our ministry.

WEEK THREE
DEVOTIONAL

Notes